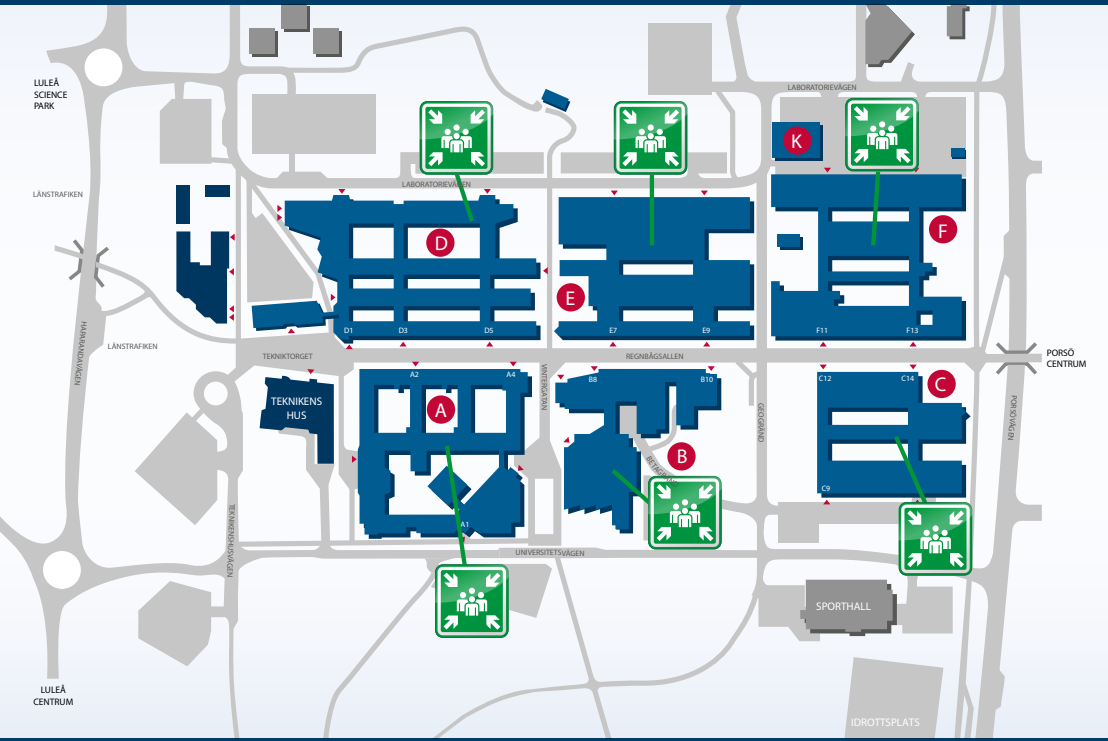


# Assembly points

## Luleå University of Technology

# Evacuation instructions



ltu.se

# Evacuation measures

## Evacuation route

All evacuation routes are marked with exit signs.



## Evacuation plans

Evacuation plans that give information including alternative evacuation routes and assembly points, are on display in strategic positions.

## Assembly point

After evacuation, assemble at the APPROPRIATE ASSEMBLY POINT as detailed on the back of this leaflet and on the evacuation plan.



## Evacuation plans

- Evacuate the building calmly, but quickly and go straight to your assembly point.
- If the closest evacuation route is inaccessible due to smoke, take a different route.
- DO NOT leave the building through smoke-filled areas.
- DO NOT look for personal belongings.

## Remember!

- Get outside as soon as possible, and then find your way to the assembly point without danger.
- Every building has its own assembly point, clearly marked with signs.

## Control Measures

### Supervision:

Everyone should ensure that:

- Evacuation routes are kept free of obstacles.
- Doors on evacuation routes are not blocked.
- Fire-fighting equipment is in place and access to it is not blocked

## Fire protection at home

### Remember:

- Is my home insurance up to date?
- Carelessness and negligence are the greatest risk sources.
- A working smoke detector saves lives.
- Smoke from a fire is generally toxic, so avoid breathing it in.
- An apartment is usually built to resist fire for 60 minutes.

# Evacuation procedure in case of fire or other danger

In order to prevent personal injury, it is essential to be able to evacuate the entire university, or parts of it, quickly.

**EMERGENCY EVACUATION:** Information on procedures at Luleå University of Technology in the event of fire or other danger. All students will receive basic information on fire, its risks and how to evacuate, together with the evacuation routes to use. Furthermore, everyone should know where the assembly points are located.

**ORGANISATION:** All staff and students at Luleå University of Technology should be trained to be able to manage an evacuation situation, so that everyone reaches safety quickly in the event of fire, or other danger.

**EVACUATION ALARM:** All premises are equipped with evacuation sounders that are activated by the fire alarm. When the alarm sounds, evacuation should begin immediately.

**SAVE:** Those who are in immediate danger first.

**SOUND THE ALARM:** By pressing the fire alarm call point, calling 112 and responding to the operator's questions.

**WARN:** Others who are in danger

**EXTINGUISH:** The fire if this is judged to be possible (do not take unnecessary risks).

**EVACUATE:** And go straight to the assembly point (do not use the lift for evacuation).

**DAMAGE LIMITATION:** In order to minimise consequential damage, wherever possible close doors and windows around the site of the fire (only if safe to do so).

**FIRES THAT ARE DETECTED IN TIME, CAN USUALLY BE EXTINGUISHED EASILY THROUGH QUICK ACTION.**